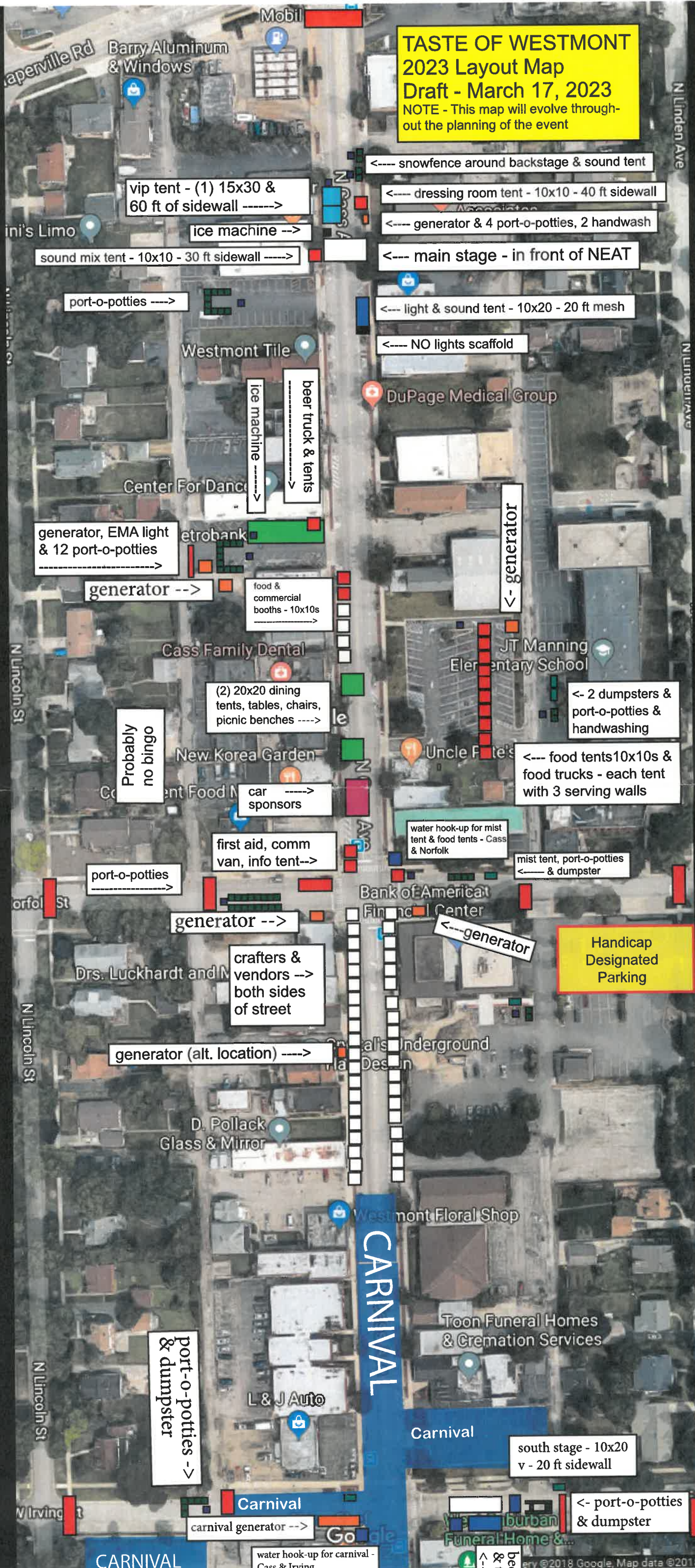


TASTE OF WESTMONT
2023 Layout Map
Draft - March 17, 2023
NOTE - This map will evolve throughout the planning of the event



CARNIVAL

CARNIVAL

Carnival

south stage - 10x20 v - 20 ft sidewall

<- port-o-potties & dumpster

carnival generator -->

water hook-up for carnival - Cass & Irving

Handicap Designated Parking

mist tent, port-o-potties & dumpster

<--- food tents 10x10s & food trucks - each tent with 3 serving walls

<- 2 dumpsters & port-o-potties & handwashing

<- generator

<--- NO lights scaffold

<--- light & sound tent - 10x20 - 20 ft mesh

<--- main stage - in front of NEAT

<--- generator & 4 port-o-potties, 2 handwash

<--- dressing room tent - 10x10 - 40 ft sidewall

<--- snowfence around backstage & sound tent

sound mix tent - 10x10 - 30 ft sidewall -->

ice machine -->

vip tent - (1) 15x30 & 60 ft of sidewall ----->

port-o-potties ----->

generator, EMA light & 12 port-o-potties -->

generator -->

food & commercial booths - 10x10s -->

beer truck & tents -->

ice machine ----->

(2) 20x20 dining tents, tables, chairs, picnic benches ----->

New Korea Garden

Probably no bingo

car sponsors -->

first aid, comm van, info tent-->

port-o-potties -->

generator -->

crafters & vendors --> both sides of street

generator (alt. location) ----->

port-o-potties & dumpster -->

Carnival

burban Funeral Home &...