



Restaurant Support Office
6800 Bishop Road, Plano, TX 75024
Tele: 972-769-3100 Fax: 972-769-3101

Prototype Issue Date: 04/20/2018

Store:
Raising Cane's
63rd & Cass,
Westmont, IL
Prototype 2C

Designer's Information:
CSRS
IMAGINE SHAPE DELIVER
6767 Perkins Road Suite 200 Baton Rouge, LA 70808
Telephone: 225 769-0546 Fax: 225 767-0060
www.csrsonline.com

Set Control Information: (ARCH use only)
Initial Setup Date:
CSRS Project Manager: Update

FOR REVIEW

Professional of Record:

Sheet Revisions: (sheet specific per Designer)

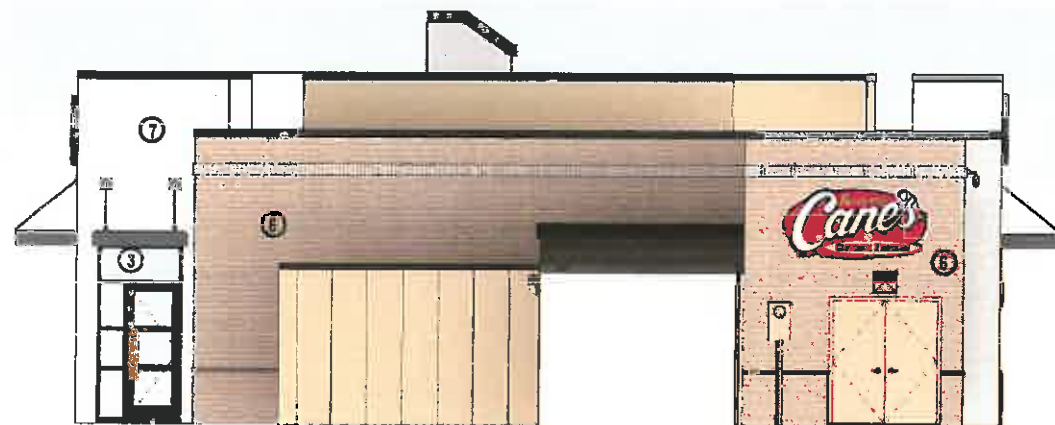
#	Date	Description

Sheet Title:
EXTERIOR ELEVATIONS

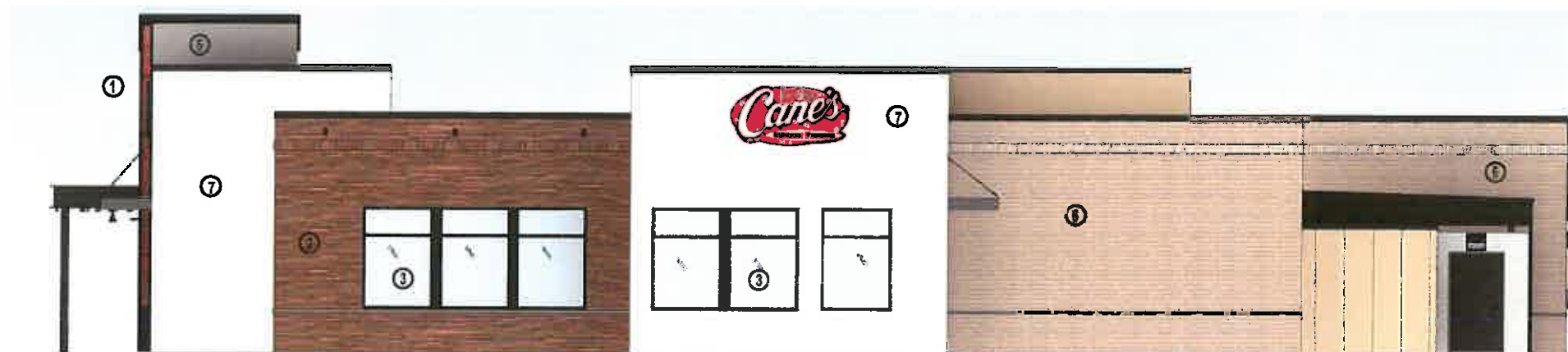
Project Number: 000000.00.000
Drawn By: Author
Sheet Number:



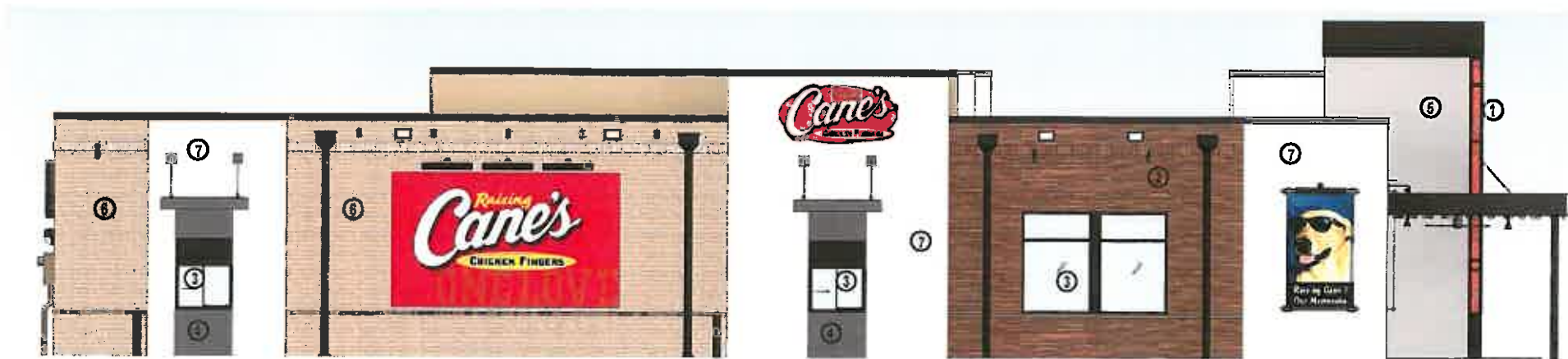
1 SOUTH ELEVATION
3/16" = 1'-0"
1/8", 1/16"



2 NORTH ELEVATION
3/16" = 1'-0"
1/8", 1/16"



3 EAST ELEVATION
3/16" = 1'-0"
1/8", 1/16"



4 WEST ELEVATION
3/16" = 1'-0"
1/8", 1/16"



RECycled METAL PANEL-
VINTAGE CAR HOOD
OCCURS AT FACE OF 'T' ONLY



SOLID, ROMAN BRICK MASONRY
MEDIUM RANGE, SMOOTH IRON
SPOT, HORIZONTAL MORTAR TO
MATCH LATICRETE "HEMP"
WEATHERED STRIKE JOINTS,
VERTICAL MORTAR TO MATCH
TERRA COTTA JOINTS FLUSH
WITH FACE



KAWNEER-ALUMINUM
STOREFRONT SYSTEM
FINISH: #40 DARK BRONZE
ANODIZED AA90022844 / AA-
945C22444 ARCHITECTURAL
CLASS 1



GC'S STEEL FABRICATORS: RAW
STEEL, SANDBLASTED W/
EXPOSED WELDS CLEAR COAT
FLAT FINISH



1/2" MOUNTAIN FOG APPLIED
OVER PORTLAND CEMENT STUCCO



BORAL "ALAMO" MODULAR
BRICK ON NON-FULL HEIGHT
WALLS. SACK RUB FINISH



LIMESTONE PLASTER OVER
SUBSTRATE